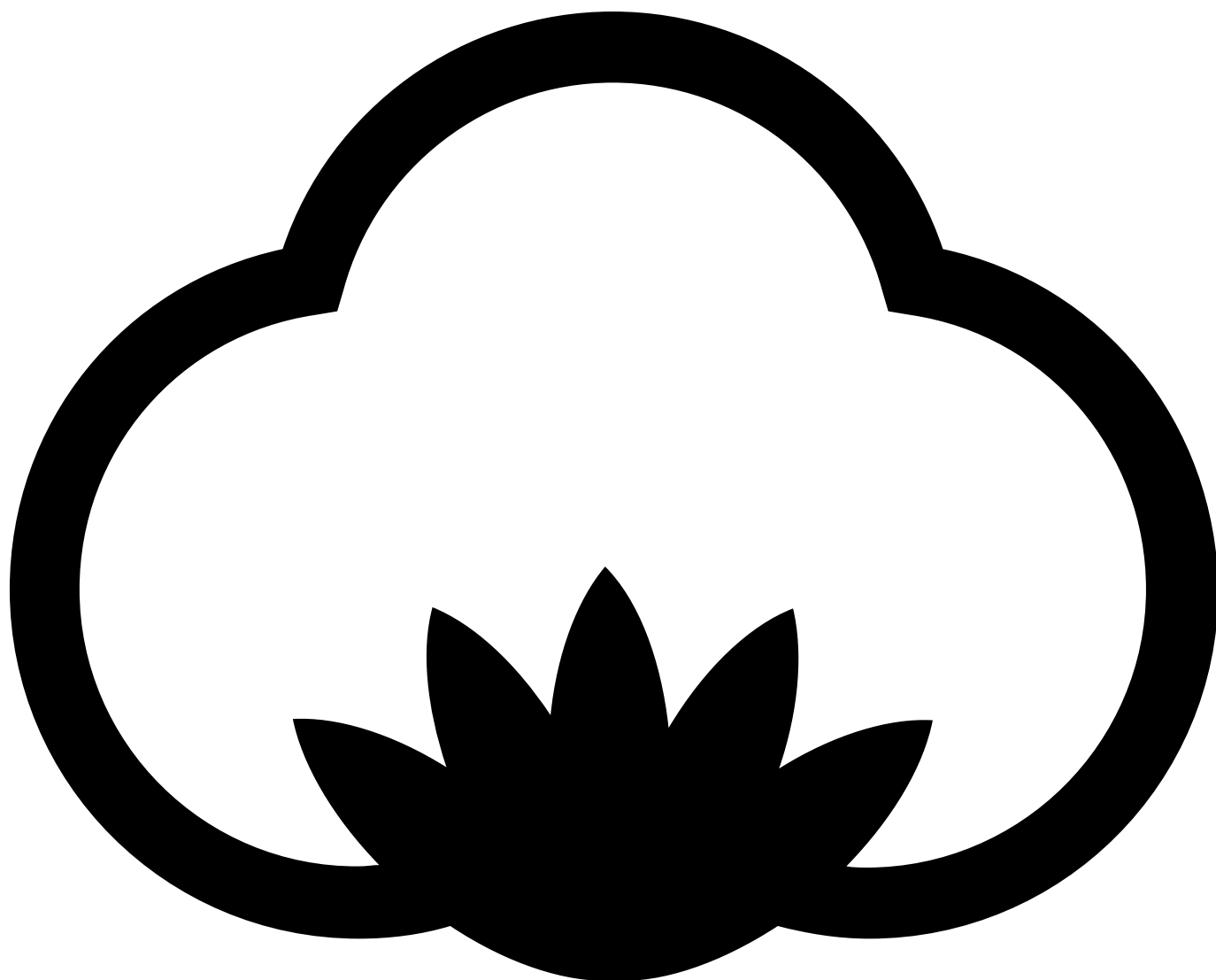


ST803 Lady Polo

210 g/m², Piqué

Some colors: Organic



ORGANIC



- Quality: 100% combed and enzyme washed cotton
- Oxford Grey: 85% organic cotton/15% viscose
- Piqué
- Weight: 210 g/m²
- Box: 50 pcs., pack: 10 pcs.

ST803 Lady Polo is a classic women's polo with a feminine fit with side seams and side slits.

This polo is available in 11 colors and in sizes S to 2XL. If you need a unisex polo that fits this lady polo, we can recommend ST802 Uni Polo.

The ST803 Lady polo has neck tape that goes all the way to the placket, and it closes with 2 buttons. The collar is made in 1x1 cotton rib. It has a sewed-on half-moon and the shoulder seams are reinforced with a double stitch.

The polo has a feminine sleeve which ends with 1x1 cotton rib with a topstitch. The sleeve curve is reinforced with a double stitch and the bottom of the polo is also hemmed with a double stitch.

We make classic products of a durable quality so they can be washed many times without color and fit changes significantly. A classic product allows you to add your own design to the product with print, transfer or embroidery thereby you can easily create your own unique product.

The ST803 Lady Polo has only a small size label, it creates space for your own logo in the neck, either with a neck label or a neck transfer. This allows you to easily brand the product as your own. We call it Brand Yourself.

Colors



Black
Black



White
White



Oxford Grey
PMS Cool Grey 7 C



Sky Blue
PMS 657 C



Orange
PMS 1505 C



Red
PMS 187 C



Rose
PMS 699 C



Dark Navy
PMS 296 C



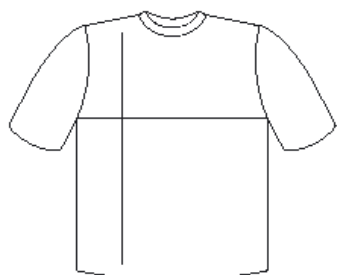
Lime
PMS 368 C



Violet
PMS 2695 C



Sand
PMS 7502 C



cm	S	M	L	XL	2XL
½ Width	47	50	53	56	59
Length	63	65	67	69	71

